



PlayStation

NTSC U/C

PlayStation

EVERYONE



CONTENT RATED BY  
ESRB

SLUS-01525

# MOBILE LIGHT FORCE





**WARNING: READ BEFORE USING YOUR PLAYSTATION® GAME CONSOLE.**

A very small percentage of individuals may experience epileptic seizures when exposed to certain light patterns or flashing lights. Exposure to certain patterns or backgrounds on a television screen or while playing video games, including games played on the PlayStation® game console, may induce an epileptic seizure in these individuals. Certain conditions may induce previously undetected epileptic symptoms even in persons who have no history of prior seizures or epilepsy. If you, or anyone in your family, has an epileptic condition, consult your physician prior to playing. If you experience any of the following while playing a video game – dizziness, altered vision, eye or muscle twitches, loss of awareness, disorientation, any involuntary movement, or convulsions – IMMEDIATELY discontinue use and consult your physician before resuming play.

**WARNING TO OWNERS OF PROJECTION TELEVISIONS:**

Do not connect your PlayStation® game console to a projection TV without first consulting the user manual for your projection TV, unless it is of the LCD type. Otherwise, it may permanently damage your TV screen.

**USE OF UNOFFICIAL PRODUCT:**

The use of unofficial products and peripherals may damage your PlayStation® game console and invalidate your console warranty.

**HANDLING YOUR PLAYSTATION DISC:**

- This compact disc is intended for use only with the PlayStation® game console.
- Do not bend it, crush it, or submerge it in liquids.
- Do not leave it in direct sunlight or near a heater or other source of heat.
- Be sure to take an occasional rest break during extended play.
- Keep this compact disc clean. Always hold the disc by the edges and keep it in its protective case when not in use.
- Clean the disc with a lint-free, soft, dry cloth, wiping in straight lines from center to outer edge. Never use solvents or abrasive cleaners.



# MOBILE LIGHT FORCE

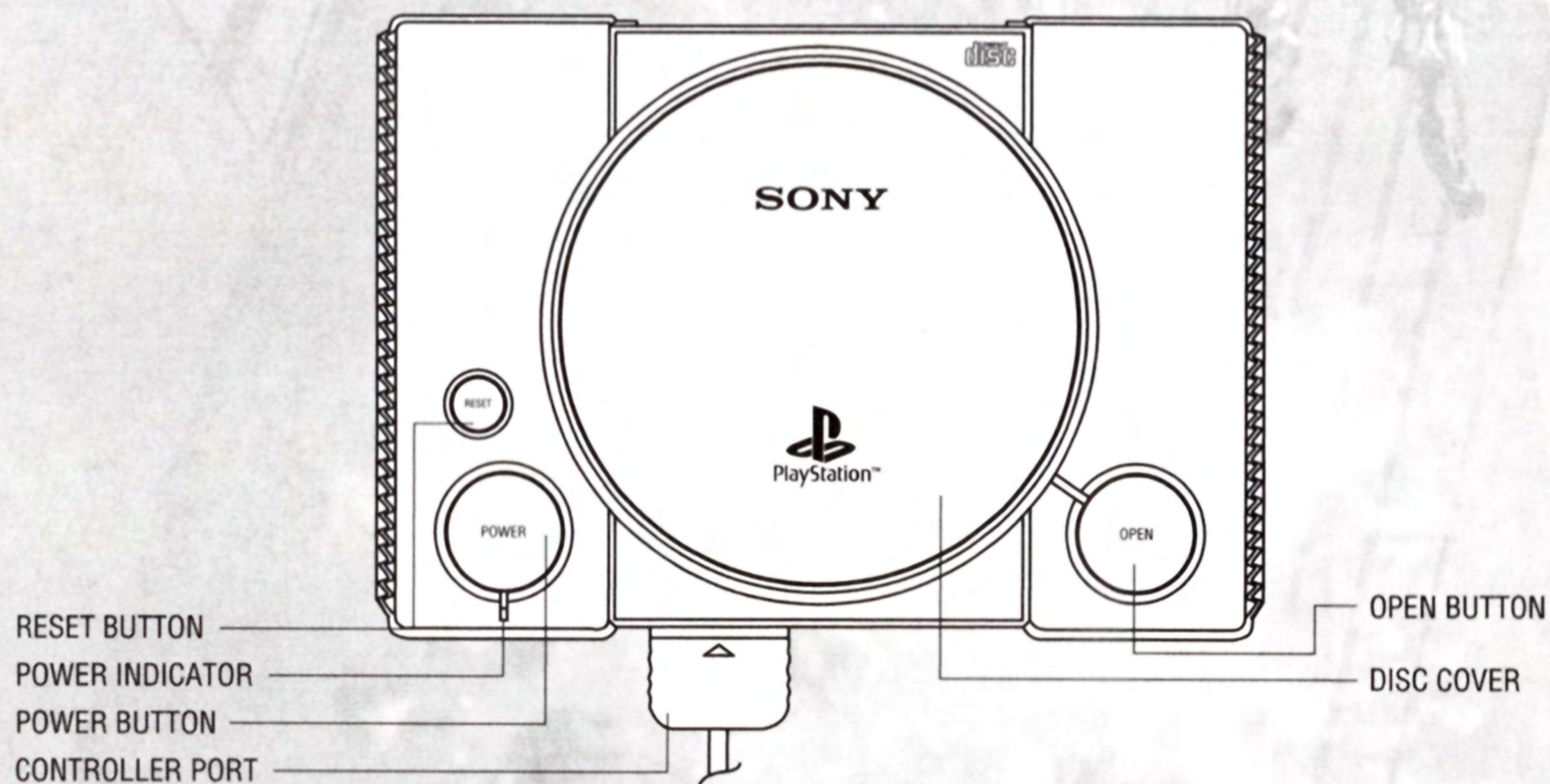
## **CONTENTS**

---

<b>STARTING THE GAME.....</b>	<b>2</b>
<b>CONTROLS.....</b>	<b>4</b>
<b>STORY.....</b>	<b>5</b>
<b>HOW TO START THE GAME/SCREEN DESCRIPTION.....</b>	<b>6</b>
<b>OPTION.....</b>	<b>10</b>
<b>CHARACTER INTRODUCTION.....</b>	<b>11</b>
<b>WARRANTY.....</b>	<b>13</b>



# STARTING THE GAME

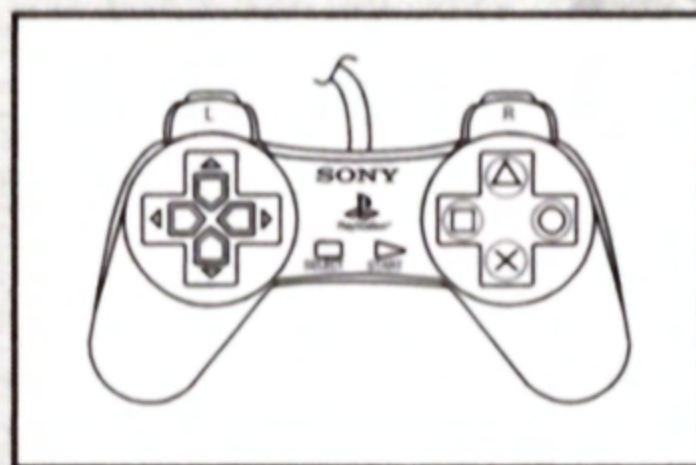
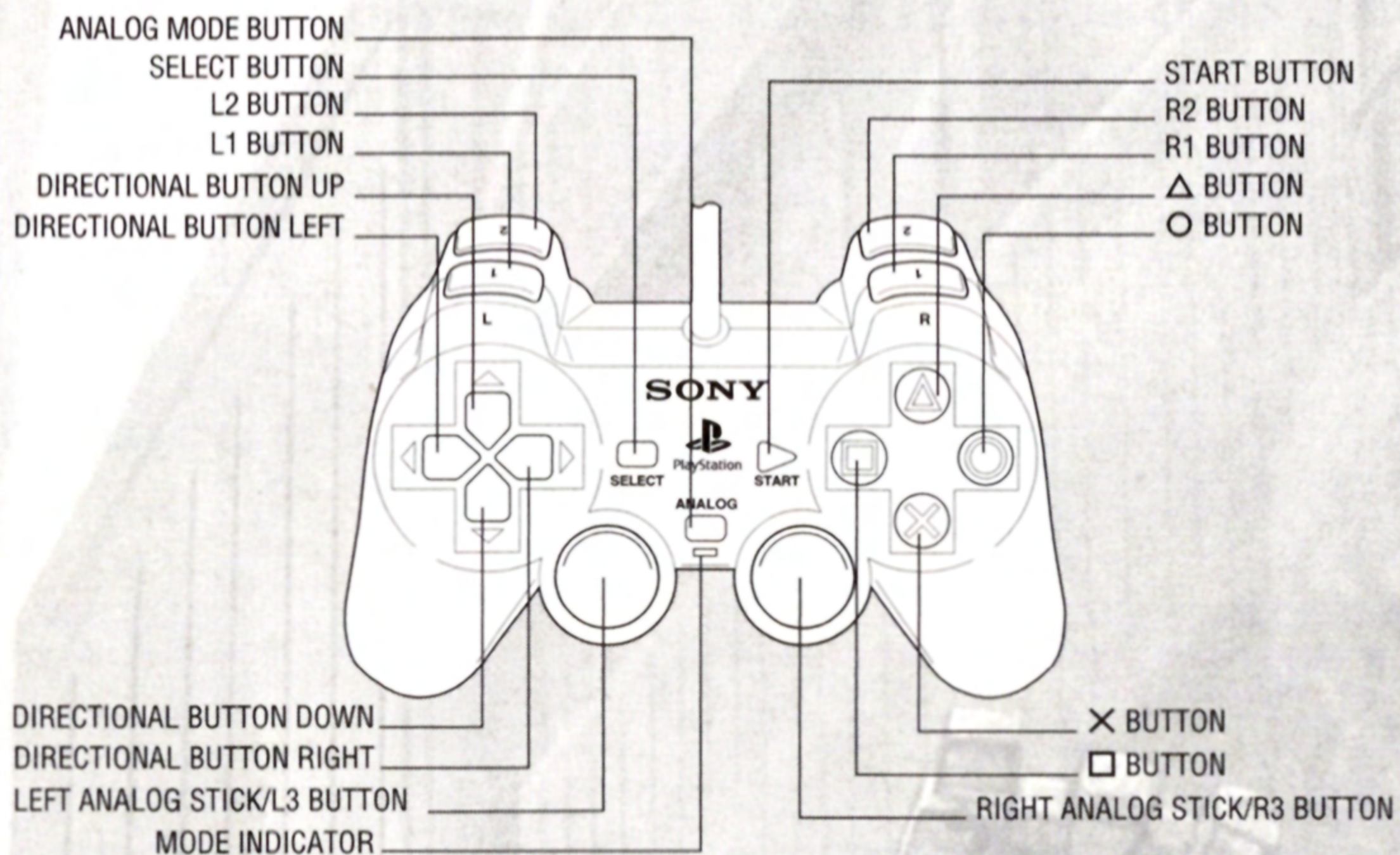


- **Set up your PlayStation® game console according to the instructions in its Instruction Manual. Make sure the power is OFF before inserting or removing a disc. It is advised that you do not insert or remove peripherals or memory cards once the power is turned on.**
- **Insert the MOBILE LIGHT FORCE™ disc and close the Disc Cover.**
- **Insert game controllers and turn on the PlayStation® game console.**

**Thank you for purchasing the exclusive PlayStation game Mobile Light Force. Before you begin to play, please read the instructions carefully, and enjoy playing the game correctly. Also, the instruction manual cannot be replaced, so please store it in a safe place**



# DUALSHOCK<sup>®</sup> ANALOG CONTROLLER



**NOTE:** Compatible only in Digital mode.

**NOTE:** You may have a controller that looks like this,  
if so please follow the digital instructions outlined above.



# ***CONTROLS***

---

## ***POWER SHOT***

Hold down the Shoot button and release to shoot the power shot. Each character has it's own special power shot.

Regarding menu accept & cancel

⊗ button = Accept

△ Button = Cancel

\*The button description on the right is the default setting. You can change the button settings at the options menu.

R2 button - Rapid Fire

R1 button - Rapid Fire

L2 button - Not Used

L1 button - Not Used

Directional Key - Select Menu, Move cursor

□ button - Rapid Fire

○ button - Bomb

⊗ button - Bomb

△ button - Fire, Hold down and release for power shot

START button - Start Game, press during game to pause

SELECT button - Score Display ON/OFF

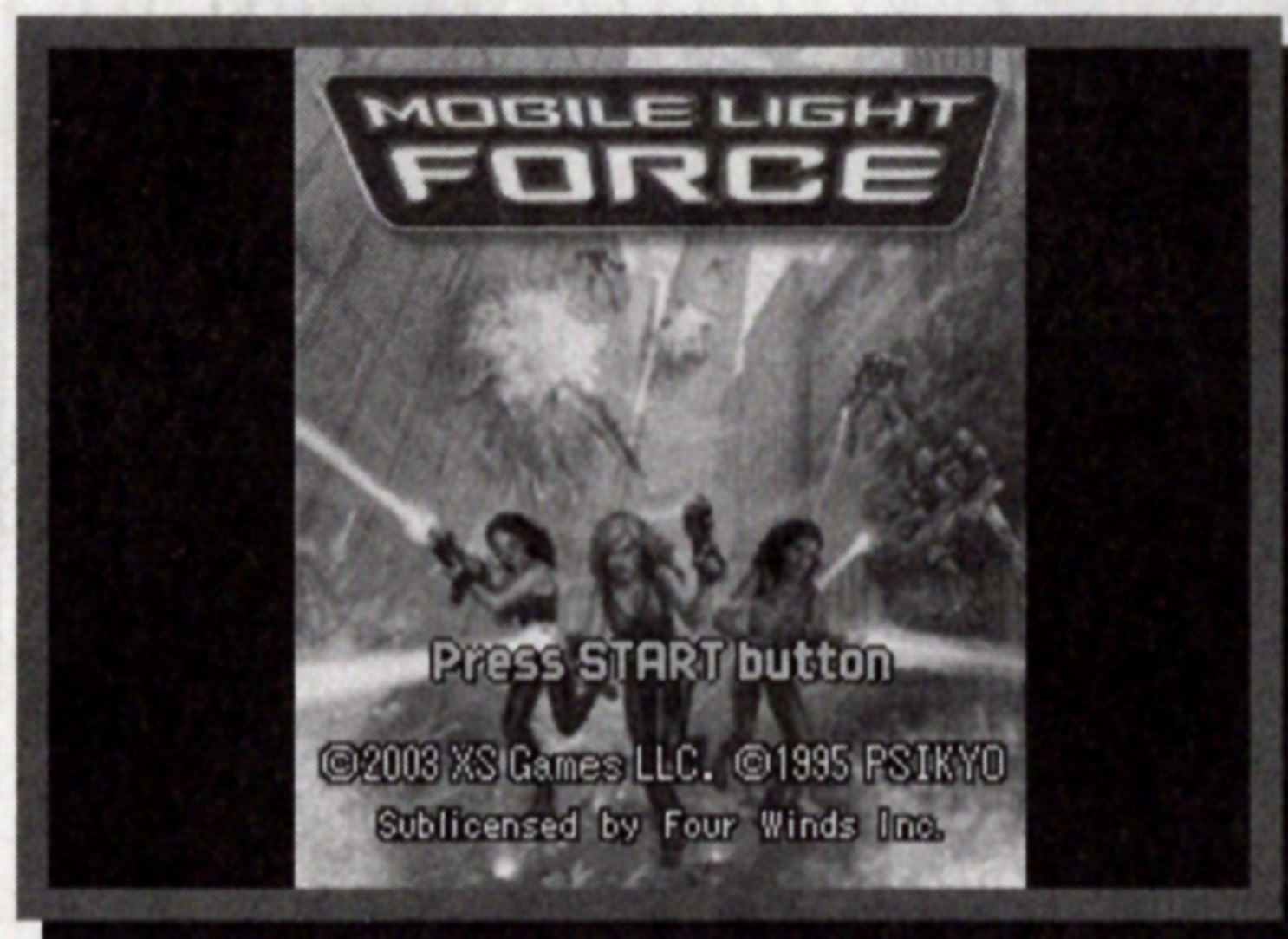


# STORY

---

The story takes place in the beginning of this century in Europe, when humans finally figured out how to fly. At that time many people searched for the magical mirror Atlar, which claims to make any wish of the owner come true. This mirror was stolen many years before from the king's grave, and nobody knows where it may be. As time passed and technology and science had advanced, people forgot about the existence of this magical mirror. So it seemed...

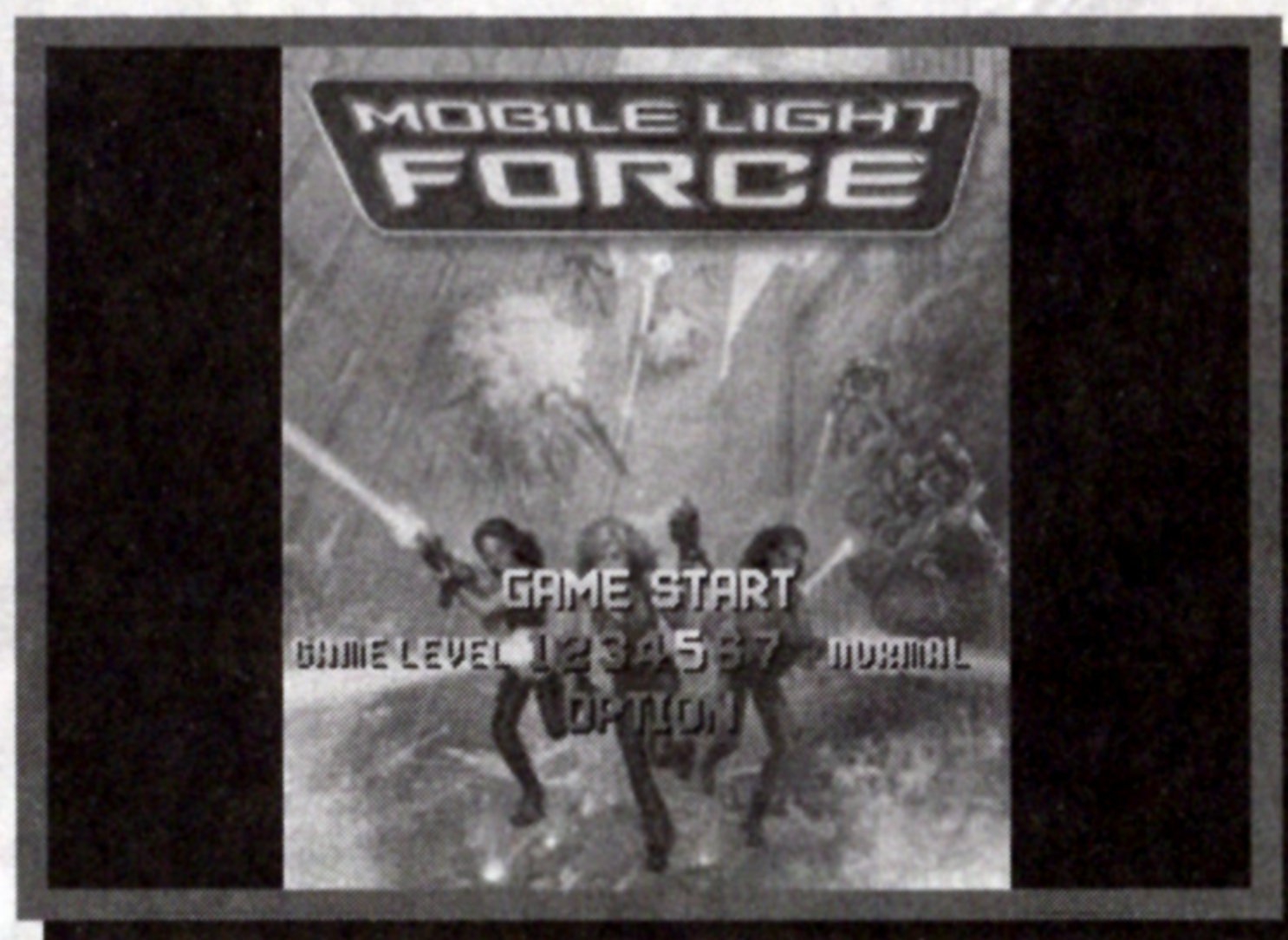
A French archaeologist found a piece of the mirror with an inscription that explains how the mirror will make your wish come true. 5 adventurers, each with their own wishes and dreams, set out to look for the mirror. With the ability to soar in the sky they all think they have the upper hand, but what they don't know is that another big organization is also after the same mirror.





# ***STARTING THE GAME***

## ***HOW TO VIEW THE SCREEN***



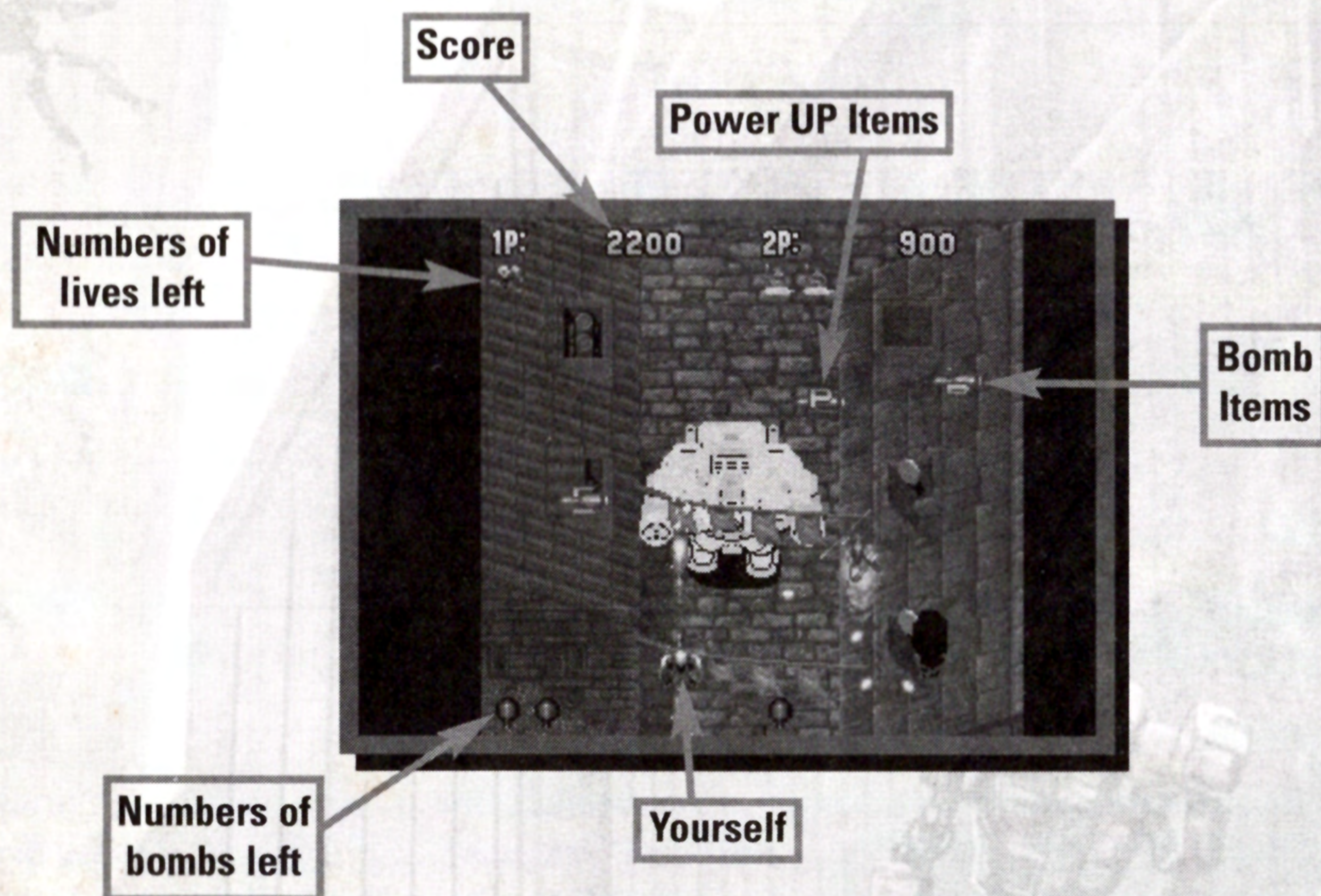
## ***HOW TO START THE GAME***

When you insert the game disc into the system and turn the power on, the animation demo will begin. Press the **START** button to go to the Title Menu. Press the **START** button again to proceed to the Mode Screen. Select the game mode you want and press the **START** button or **⊗** button to decide.

If you select **MAIN GAME** your screen will look like the above. In the Option menu, you will be able to change the difficulty setting as well as other settings. Press the **START** button or **⊗** button to decide. (For Descriptions of different game modes and different settings, refer to pages 8 - 9).



## SCREEN DESCRIPTIONS



## WHEN YOU BUMP INTO AN ENEMY

You can only die if a shot hits you. However, if you crash into a flying enemy, you will be penalized.

- Your Shot power will decrease and be released as a power item. When your shot power is at its lowest, then your bomb stock will be taken. These items, unlike regular power up items, will not bounce back at the edge of the screen.
- When you are in the middle of power up, you will have to re-power.
- You will not be able to shoot or drop a bomb for approximately half a second.



### ***ITEM DESCRIPTION***

**Power Up Items** - Your shot power will increase a level. There are 1 - 4 levels. After level 3, a sub weapon will automatically be attached.

**Bomb Items** - Your bomb stock will increase by 1. You can hold up to 6 bombs.

**Bonus Items** - Your bonus points will increase.

## ***MODE SCREEN AND SAVE***

---

### ***MODE SELECT SCREEN***

If you press the **START** button at the title screen, you will see the mode select screen. Press the Directional button up or down and select the mode you want and press the **START** or **⊗** buttons to accept. At the Game Start screen, you can also set the difficulty setting and the option settings.

### ***SETTING THE GAME DIFFICULTY***

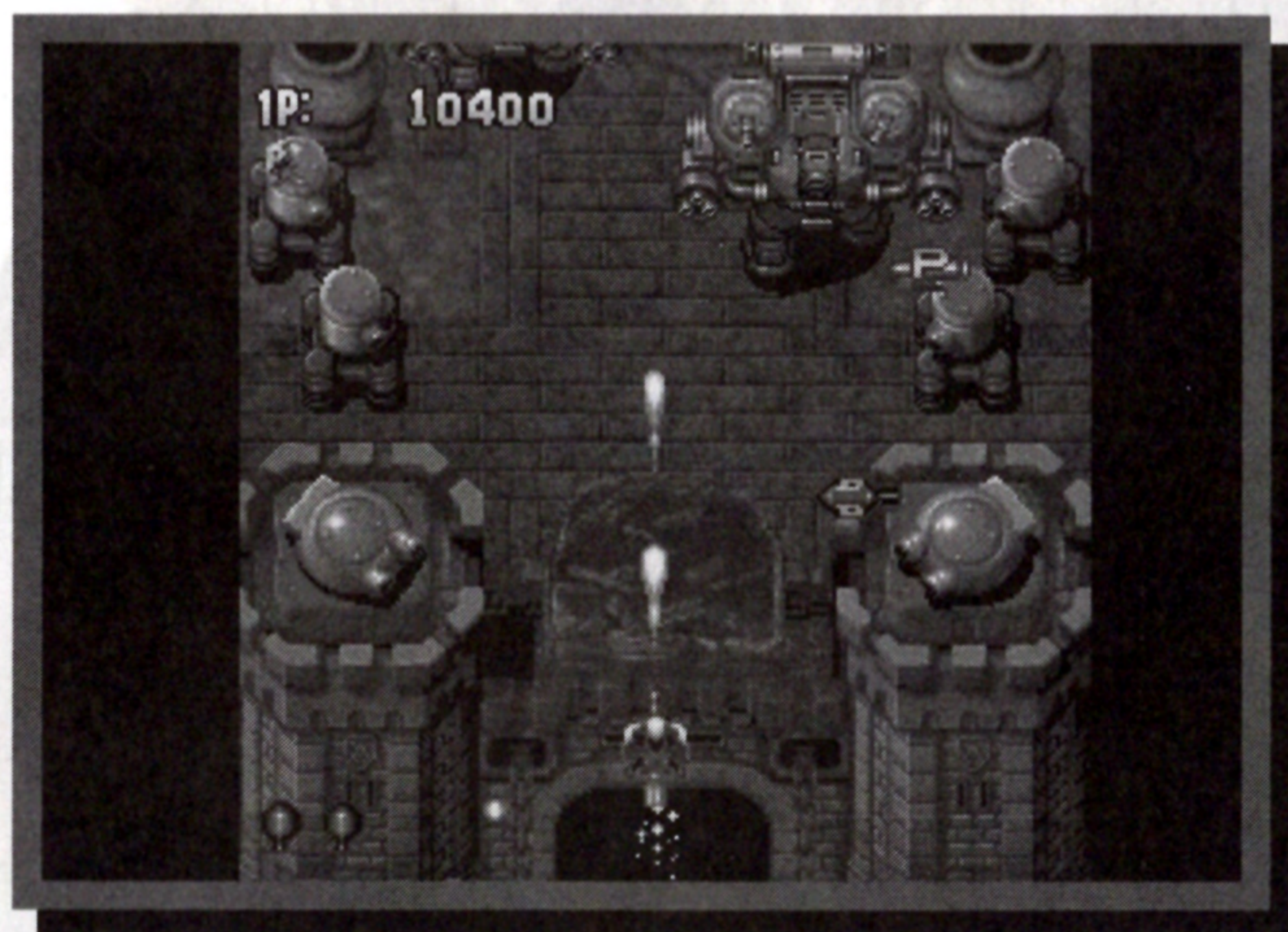
There are 7 stages from **Monkey** to **Very Hard**. Use your Directional button and select.

### ***MAIN GAME***

The screen will move up and down according to your movement. There are 7 stages and during the first 3 stages, the character order will randomly change. If you want a 2 player game, press the **START** button on the player 2 controller on the character select screen. You will then be able to select the player 2 character.

\* During play, the game may pause to read data from the CD.







# **OPTION MODE**

---

## **FIGHTERS**

You can choose the number of lives. 1 - 4 can be chosen.

## **EXTEND**

Extended score adjustments. You can choose 2 different types.

## **AUDIO**

Stereo or Mono.

## **MUSIC**

You can choose different game music.

## **CONTROLLER**

You can customize your button settings. Select Default to change back to the original settings. You can change the game settings or listen to game music. Choose the contents using up and down. Only in the Controller setting, you will go to a different screen and return upon setting.

# **CHARACTERS**

---

## **MARION**

A powerful magic user, Marion is an extremely energetic girl. She is an inexperienced wind magic user that uses a broom to fly. She has a cute face but is very stubborn, and is probably up to something again. She and her rabbit friend bom bom will go on an adventure looking for the legendary magic mirror.

Born in England, age 13

**SPECIAL ATTACK** - Fire Rabbit

**BOMB** - Windshaver

## **YUAN-NANG**

Presumably a female fighter, but is not quite certain if she is even a human. She has the ability to ride a cloud. Small body frame, but a very experienced fighter who is always looking to fight enemies that are stronger than she is. There are many mysteries about this person. Some say she is actually a monkey.

Born in China, age ?

**SPECIAL ATTACK** - Fighting stick hell attack

**BOMB** - Multiple attack army



## ***MLF 2000***

An attack robot capable of flying, he was developed by the Russian Military. Uses a central rocket as a central axis that enables him to do circular attacks. Always receiving orders from the military, and this time he's ordered to go find the magic mirror. But lately, it seems like he's starting to think on his own...

Born in Russia, age 6 months

***SPECIAL ATTACK*** - Rocket Punch

***BOMB*** - Milf 2000 Buster

## ***JASON LAST***

A scientist who has a degree in archaeology and is also a very cool adventurer. After hearing about the legendary magical mirror, he could not keep himself from going out to look for it. He built a rocket pack that lets him fly.

Born in Germany, age 28

***SPECIAL ATTACK*** - Shockwave

***BOMB*** - A scientifically formulated bomb

## ***JOHN SUAREZ***

After losing his wife 40 years ago, he has been working non-stop as a carpenter. He is extremely well built and will go anywhere for adventure. He rides his helicopter that he built himself. Using his muscles and strength, he flies to places unimaginable.

Born in Japan, age 60

***SPECIAL ATTACK*** - Dragon Rocket Shot

***BOMB*** - The great fire of edo

## ***RUGE***

President of the large company Pakusta. Has a lot of ambition and beauty. She uses her elite employees to organize Trump, an underground gang. She heard about the legendary mirror and was the first to go look for it, however...she is also very clumsy.

Born in England, age 26



## **CLOAD**

Manager of one of the Pakusta factories. He is tall and is built like a rock, but is a very sensitive man. Many workers are loyal to him, but people say that even his brain is pure muscle. In the Trump organization, he is a pilot and is also a good fighter with more than 10 special moves.

Born in France, age 34

## **ACE**

The leader of the development of the Pakusta Empire. He has superior knowledge and an exploding personality. He is in charge of the weapons department in the Trump organization. Actually, he was school mates with Jason Last and is one of his biggest rivals. As you can see, Ace gets mad very easily.

Born in Germany, age 25

## **CREDITS**

---

### **Developer:**

PSIKYO for XS Games

### **Producer:**

John "HB" Suarez

### **Associate Producer:**

Santos Gonzalez

### **QA:**

Tamara Carrion

Rene Zelada

Winter Catlin

Derryl Newman

Jason Last

### **Package Design:**

Moore Design Group



# WARRANTY

---

**LIMITED WARRANTY** - XS Games warrants to the original purchaser of this software product, for a period of ninety (90) days from the date of original purchase (the "Warranty period"), that under normal use, this medium on which this computer program is recorded is free from defects in materials and workmanship. This software program is sold "as is" without express or implied warranty of any kind and XS Games is not liable for any losses or damages of any kind resulting from use of this program. This warranty is not applicable to normal wear and tear. This warranty shall not be applicable and shall be void if the defect in this software product has arisen through abuse, unreasonable use, mistreatment or neglect.

**WARRANTY CLAIMS** - To make a warranty claim under this limited warranty, please return the product to the point of purchase accompanied by proof of purchase, your name, your return address, and a statement of the defect, or send the disk(s) within 90 days of purchase to: XS Games, 8800 Global Way, West Chester, OH 45069. Include a copy of the dated purchase receipt, your name, your return address, and a statement of the defect. XS GAMES or its authorized dealer will, at our option, repair or replace the product and return it to you (postage prepaid) or issue to you a credit equal to the purchase price.

To replace defective media after the 90-day warranty period has expired, send the original disk(s) to XS Games at the above address with a check or money order for \$15.00.

The foregoing states the purchaser's sole and exclusive remedy for any breach of warranty with respect to the software product.

**LIMITATIONS** - This warranty is in lieu of all other warranties and no other representations or claims of any nature shall be binding on or obligate XS Games. Any implied warranties applicable to this software product, including warranties of merchantability and fitness for a particular purpose, are limited to the ninety (90) day period described above. In no event will XS Games be liable for any special, incidental, or consequential damages resulting from possession, use, or malfunction of this XS Games software product.

Some states do not allow limitations as to how long an implied warranty lasts and/or exclusions or limitations of incidental or consequential damages so the above limitations and/or exclusions may not apply to you. This warranty gives you specific rights, and you may also have other rights which vary from state to state.

**NOTICE** - XS Games reserves the right to make improvements in the product described in this manual at any time and without notice. This manual and the software described in this manual are copyrighted. All rights are reserved. No part of this manual or the described software may be copied, reproduced, translated, or reduced to any electronic medium or machine-readable form without the prior written consent of XS Games, 8800 Global Way, West Chester, OH 45069, ATT: GAME MANAGEMENT.



# LOOK FOR

# MOBILE LIGHT FORCE 2

*ALSO AVAILABLE FOR PLAY ON THE  
PLAYSTATION®2 COMPUTER ENTERTAINMENT SYSTEM.*



XS Games LLC, 8800 Global Way, West Chester, OH 45069.  
©2003 XS Games LLC. ©2001 Alfa System Co., Ltd.  
Sublicensed by Kids Station Inc. and Four Winds Inc.

Licensed for play on the PlayStation 2 computer entertainment systems with the NTSC U/C designation only. "PlayStation" and the "PS" Family logo are registered trademarks of Sony Computer Entertainment Inc. The ratings icon is a trademark of the Interactive Digital Software Association. Manufactured and printed in the U.S.A. THIS SOFTWARE IS COMPATIBLE WITH PLAYSTATION GAME CONSOLES WITH THE NTSC U/C DESIGNATION. U.S. AND FOREIGN PATENTS PENDING.

